

CERTIFICATE OF LOCATION OF GOVERNMENT CORNER

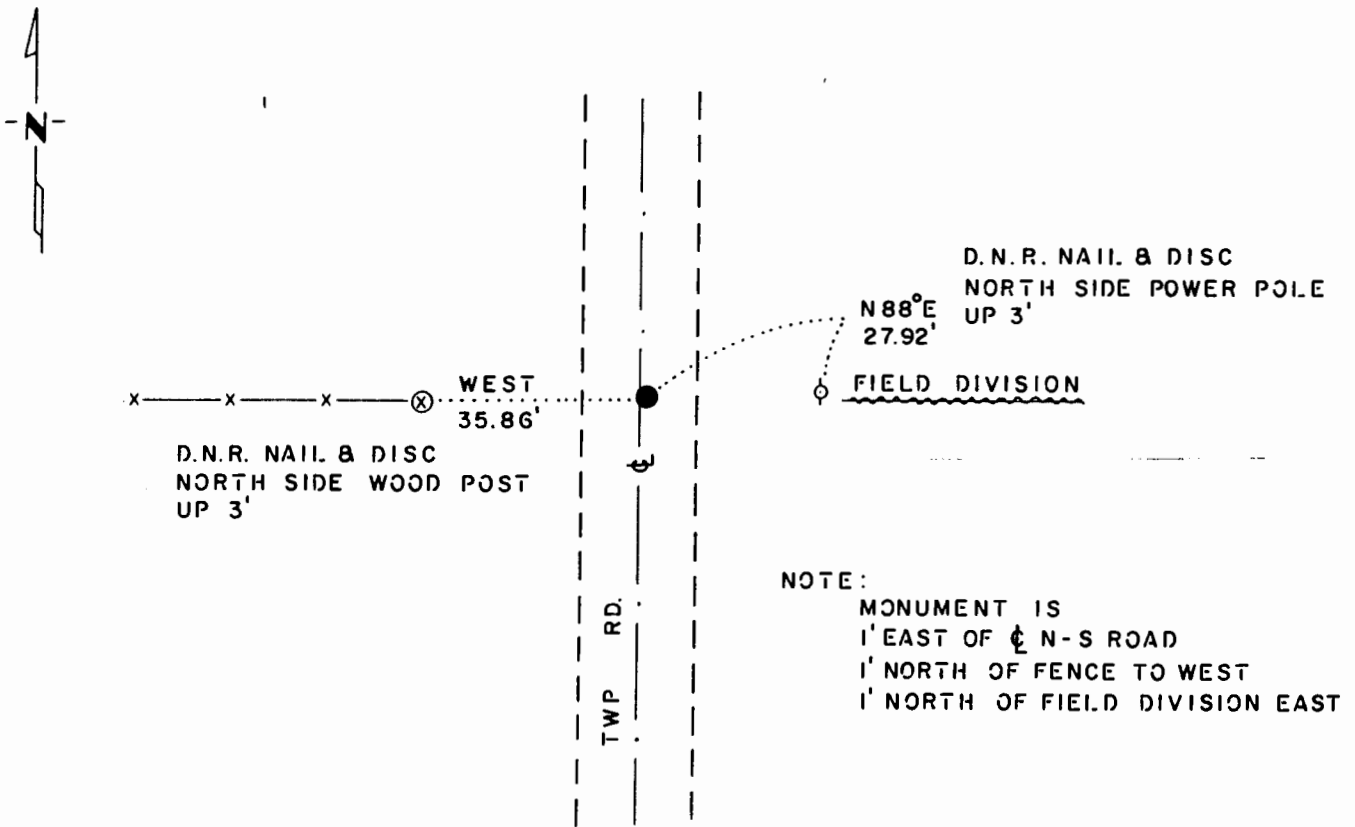
EAST QUARTER Corner of Section 11, Township 105 N., Range 42 W., 5 th. P.M.

STATE OF MINNESOTA, County of MURRAY

At the corner location shown on the sketch:

- On 4-24-84 found a 16"x28"x14" FIELD STONE, DOWN 20"
DATE
- left monument as found, lowered monument, removed monument (explain)
- On 4-24-84 placed a 1 1/4"x1 1/4"x15" PERFORATED STEEL TUBE WITH ALUMINUM
DATE
CAP STAMPED "D.N.R. SURVEY MARKER" OVER STONE, DOWN 0.4'

SKETCH OF REFERENCE TIES



NOTE:
MONUMENT IS
1' EAST OF C N-S ROAD
1' NORTH OF FENCE TO WEST
1' NORTH OF FIELD DIVISION EAST

BEARINGS OBSERVED WITH COMPASS

Statement of evidence relative to this corner location is on back of page.

J. B. M. 5-14-84
G-1168

I hereby certify that this document and the data contained herein was prepared by me or under my direct supervision.

Best R. Eveland 10-5-84
SIGNATURE DATE

Registration No. 10516

- Land Surveyor, Professional Engineer
- County Surveyor, County Engineer

OFFICE OF THE COUNTY RECORDER
County of Murray

I hereby certify that this document was filed in the Co. Recorders office at 10 A. M. on the 11th day of October A.D., 1984

County Recorder Kevin J. Ohme

By _____, Deputy

DOCUMENT NO. 170426

East Quarter Corner Section 11, Township 105 North, Range 42 West

This corner was originally established by the U. S. General Land Office survey in 1861. The government notes show corner marked with a wood post set in mound of earth with pits and trench dug around the mound.

On March 21, 1984, the DNR Bureau of Engineering contacted the Murray County Offices of the Recorder and Highway Engineer for corner information.

No resurvey information was obtained for this corner.

In April 1984, the DNR Bureau of Engineering traversed to the area of the corner and located the intersection of the center line of a north-south road, fence line west and field division east.

On April 24, 1984, the DNR Bureau of Engineering dug with a backhoe at the above mentioned intersection and found a 16 inch by 28 inch by 14 inch field stone down 20 inches at natural ground.

The DNR Bureau of Engineering accepts the stone as the location of the original government corner.

Traverse information is available from the DNR Bureau of Engineering.

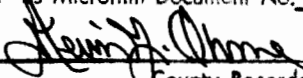
State of Minnesota, }
County of Murray, } ss.

170426

I hereby certify that the within instrument was filed in this office for record on the

11th day of October A.D. 19 84,

at 10:00 o'clock A. M., and was duly recorded as Microfilm Document No. 170426


County Recorder